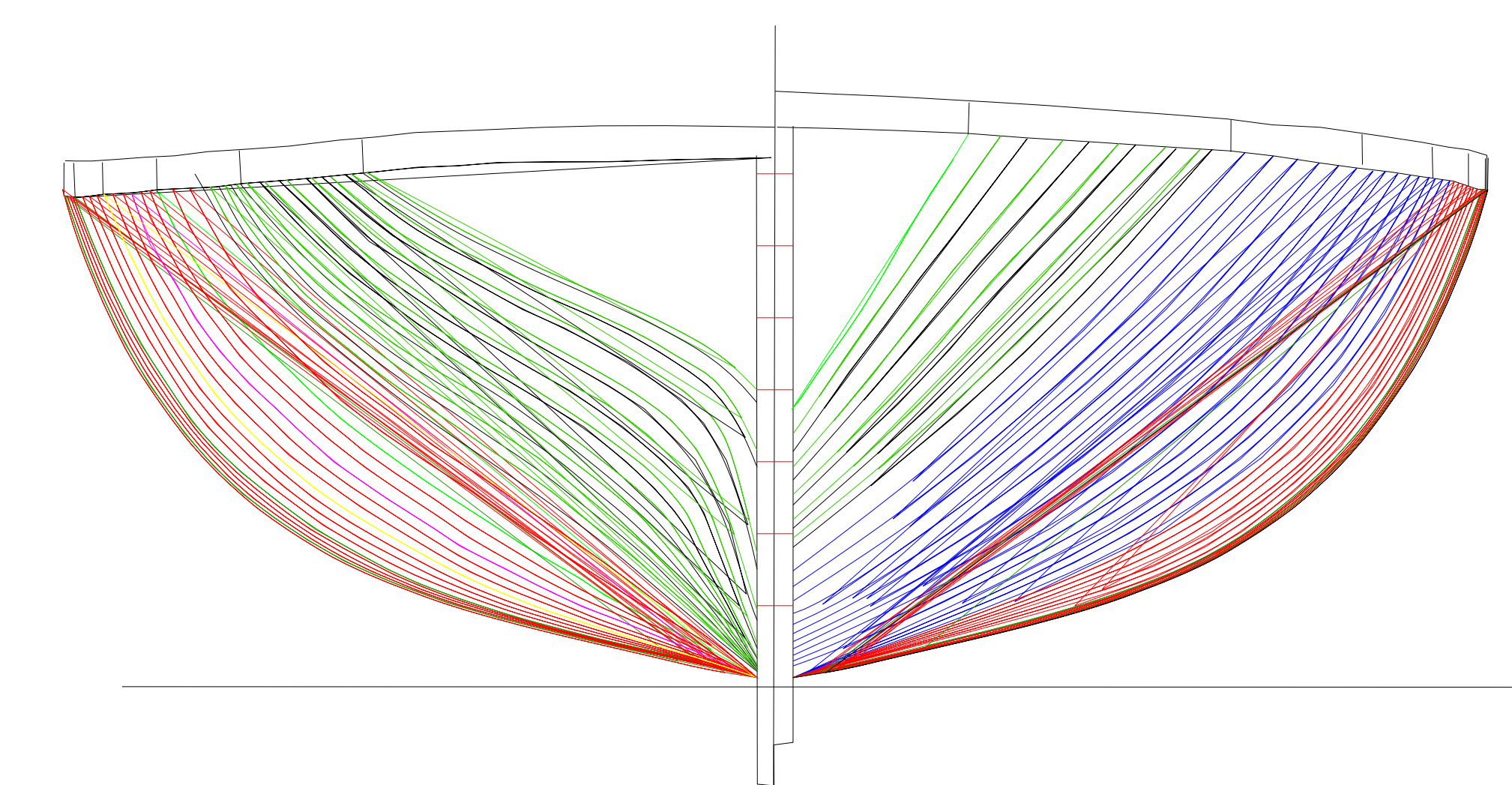
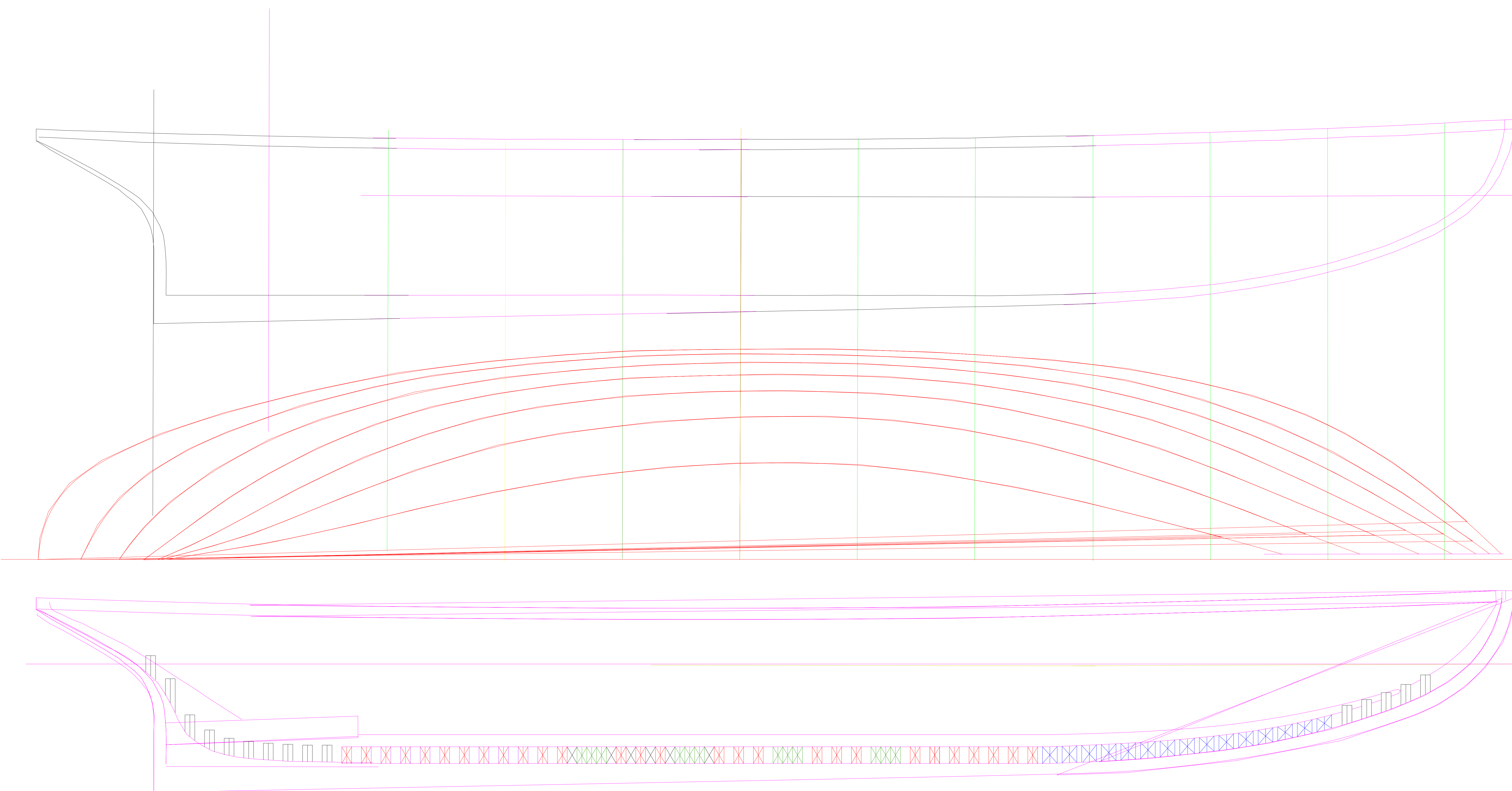


Converted to PDF format from DXF via CDR by Bob Hill Dec 11, 2005



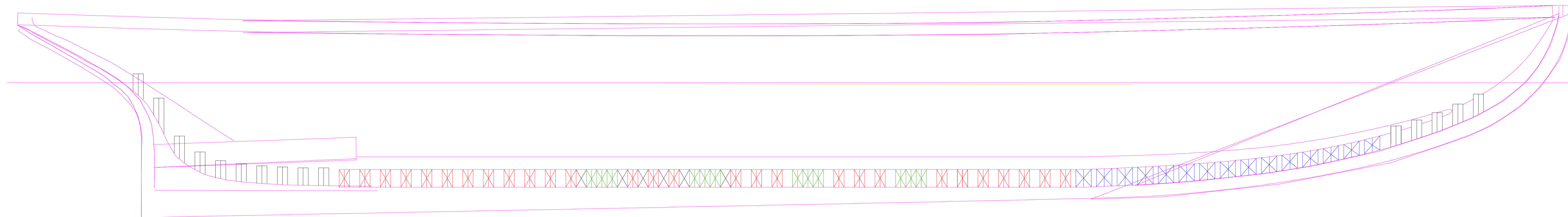
Converted to PDF format from DXF via CDR by Bob Hill Dec 11, 2005

GREEN FRAMES ARE TRIPLE ALL OTHERS ARE DOUBLE

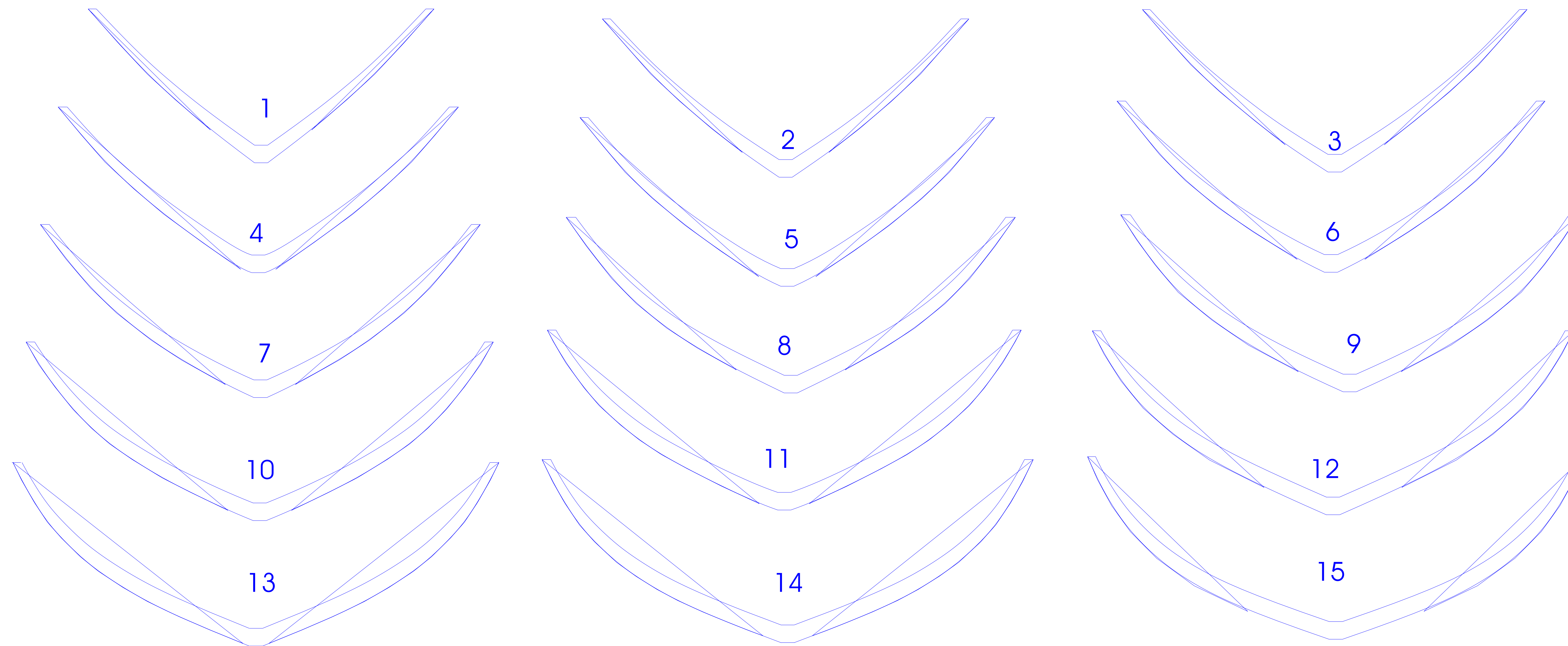
BLACK FILLER FLOORS CAN BE MADE UP OF DOUBLE FRAMES OR ONE MASSIVE TIMBER

BLACK, RED, GREEN FRAMES ARE SISTER FRAMES .114 STOCK

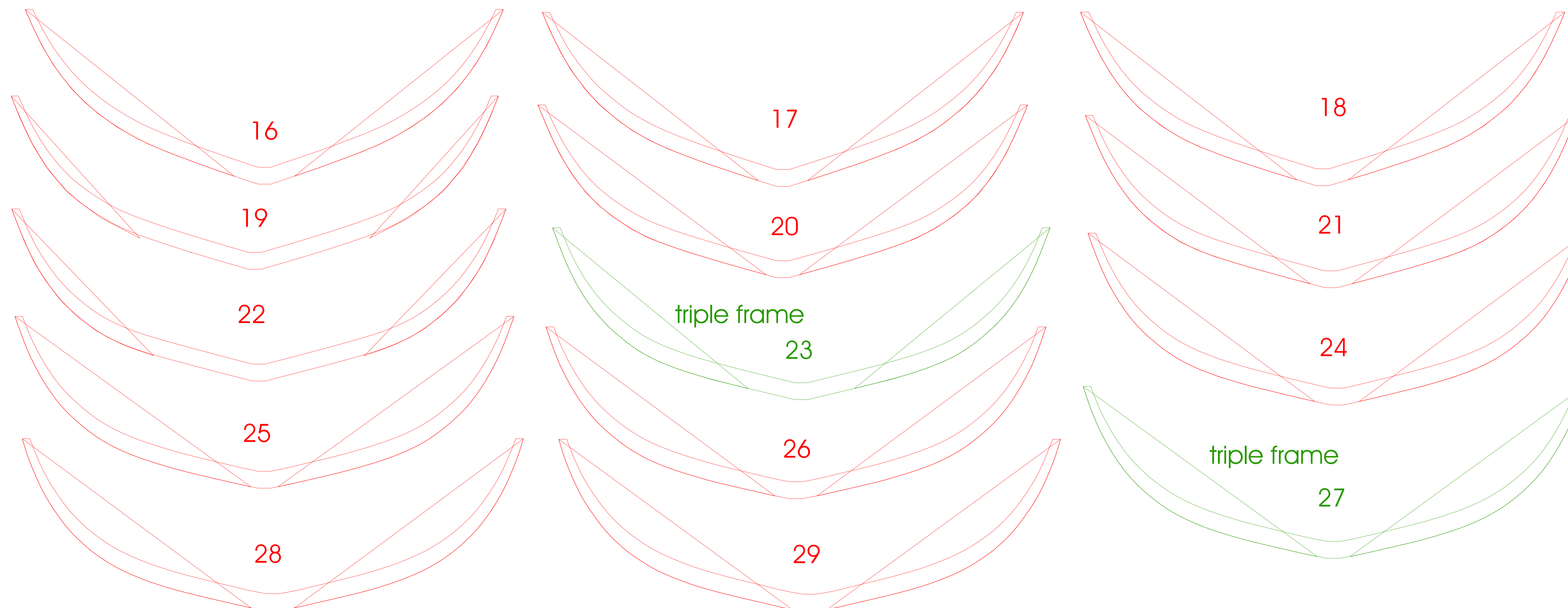
BLUE FRAMES .173 STOCK



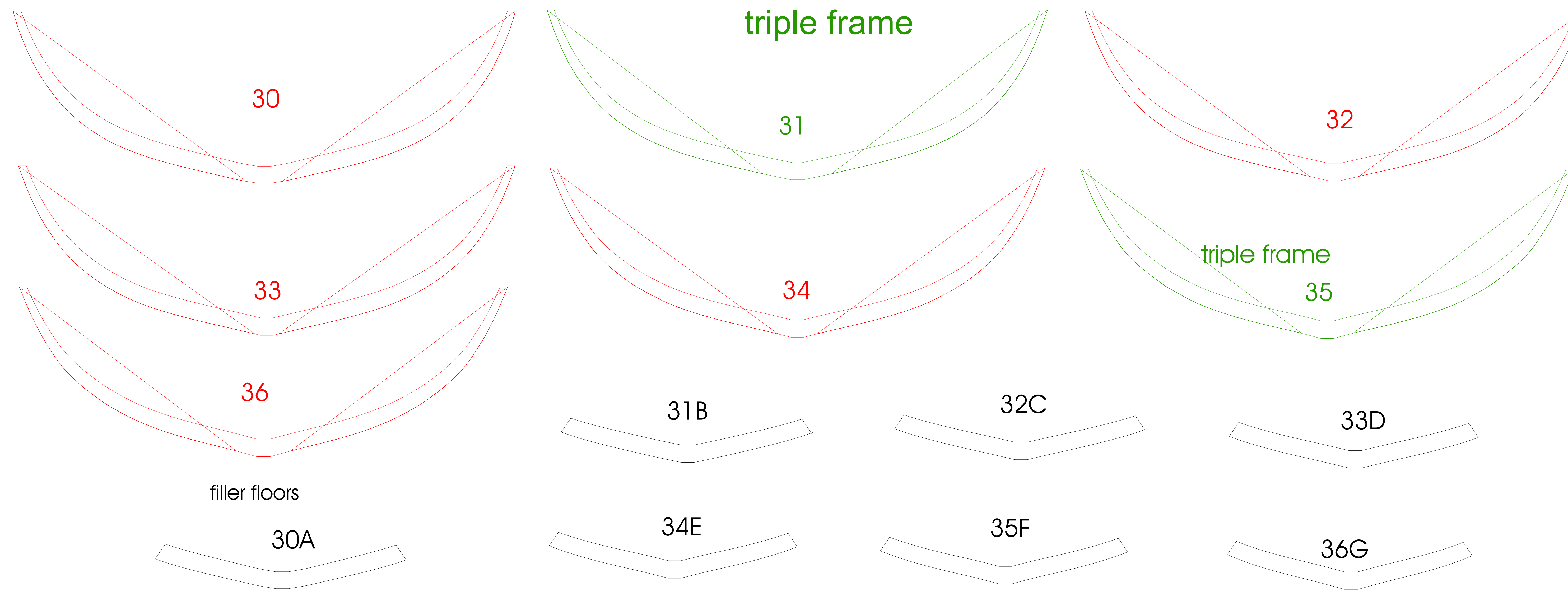
FRAMES 1 to 15



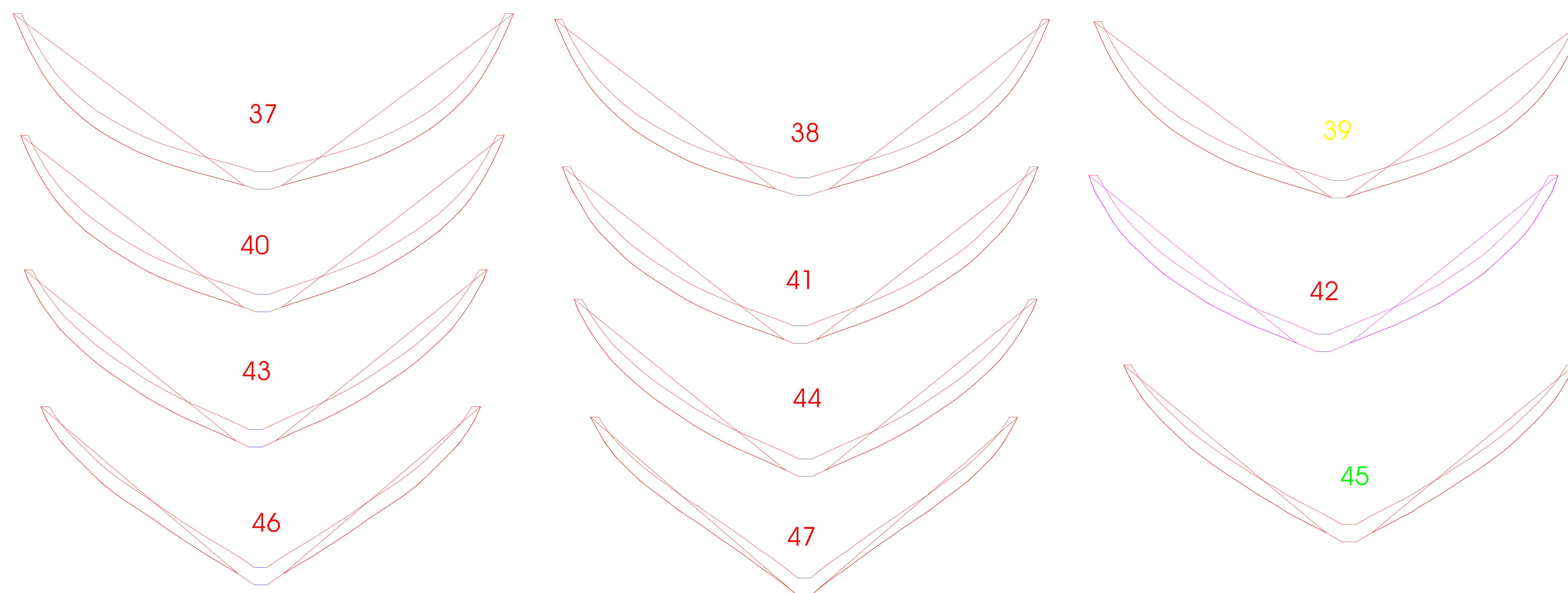
FRAMES 16 to 29



FRAMES 30 to 36



Frames 37 to 45



FRAMES A to E and 48 to 57

