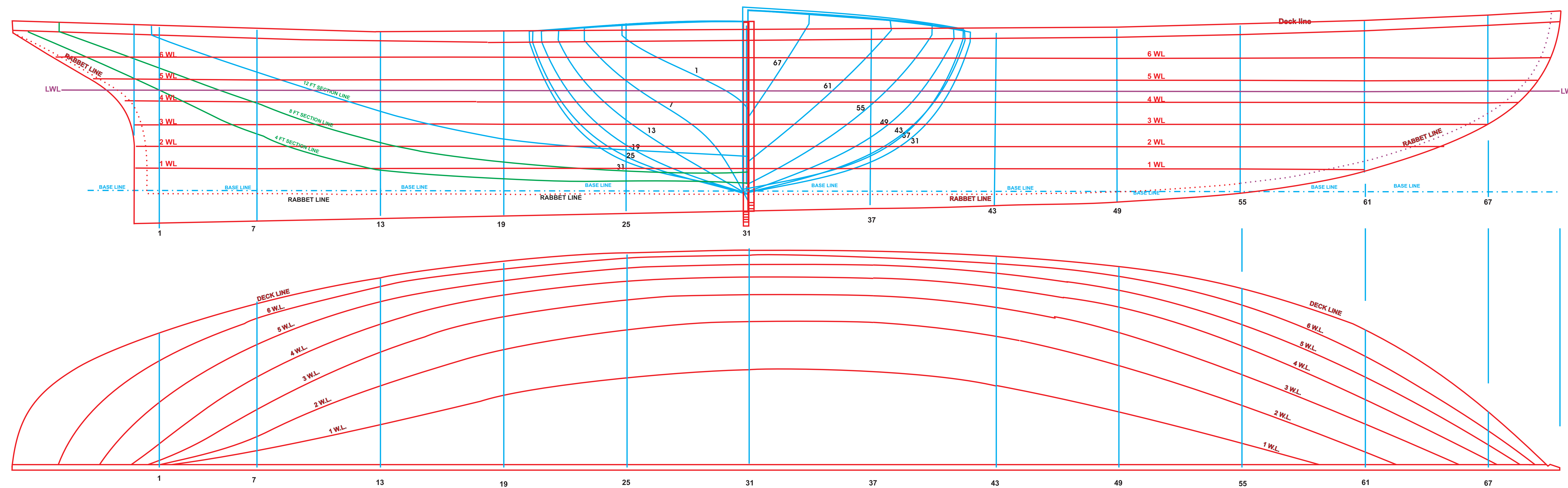


Converted to Vector from a Raster scan by Bob Hill January 2006

LINE DRAFT #1

1/4" = 1'

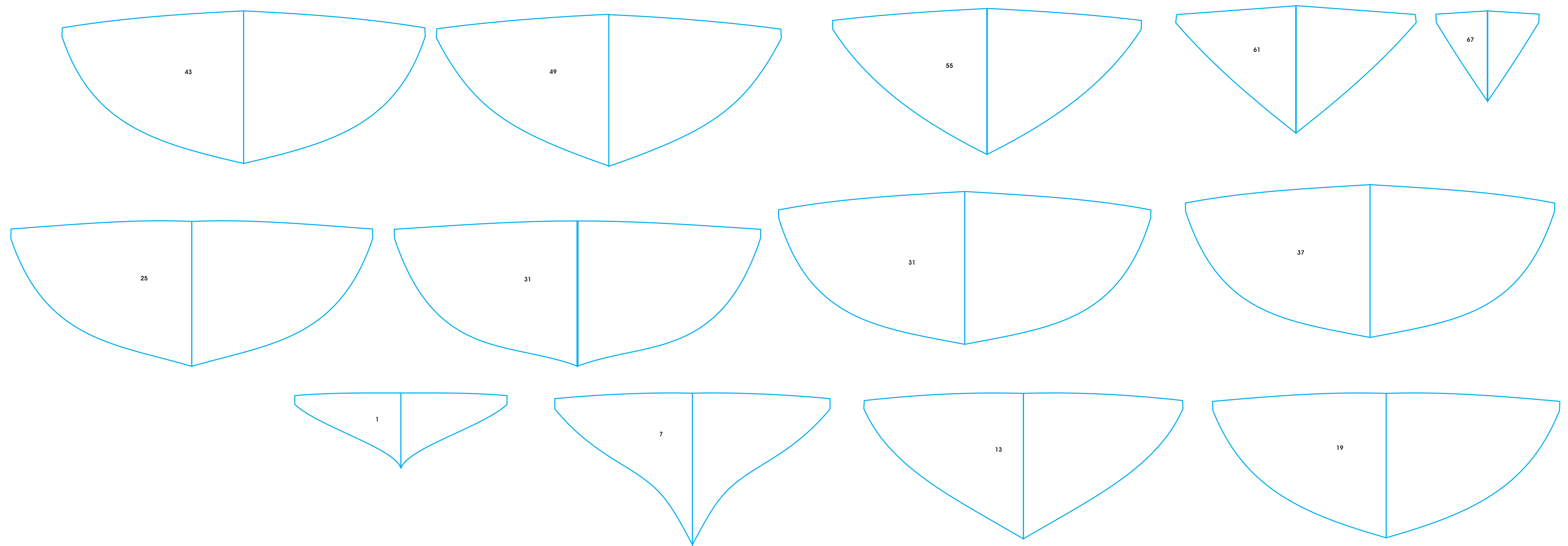


Converted to Vector from a Raster scan by Bob Hill January 2006

LINE DRAFT #2

Station bulkhead templates

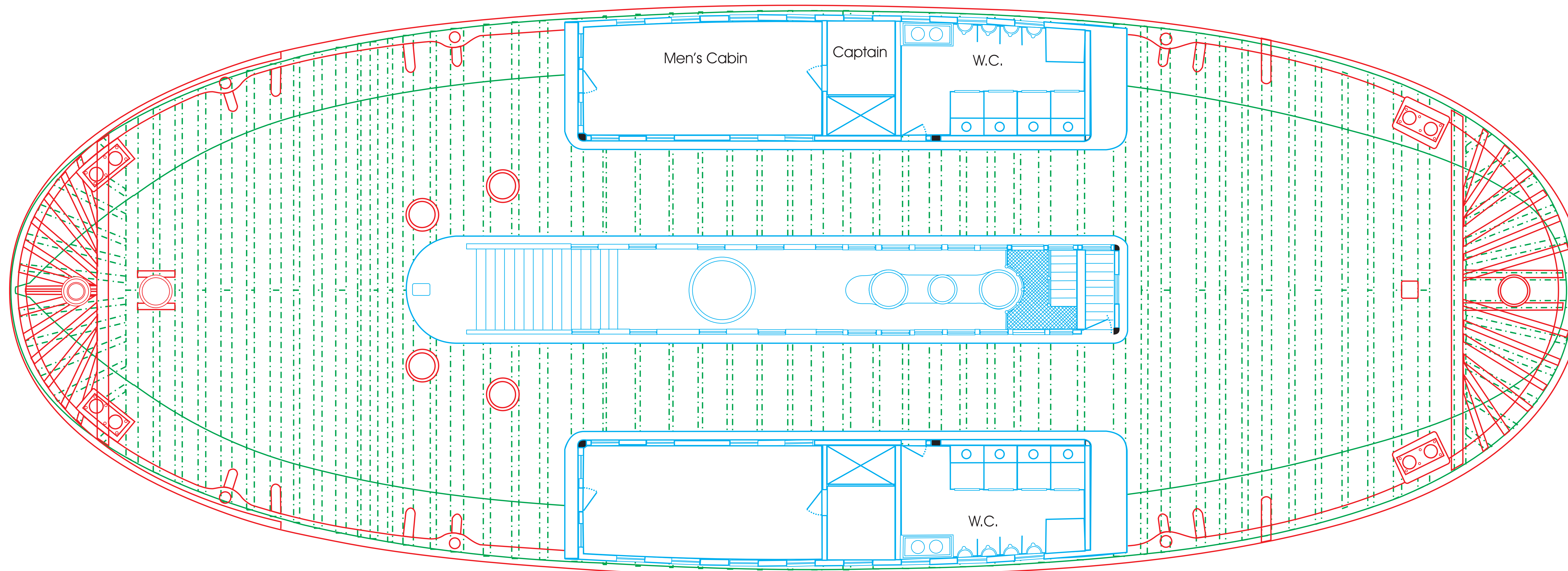
$\frac{1}{4}'' = 1'$



Converted to Vector from a Raster scan by Bob Hill January 2006

LINE DRAFT #3

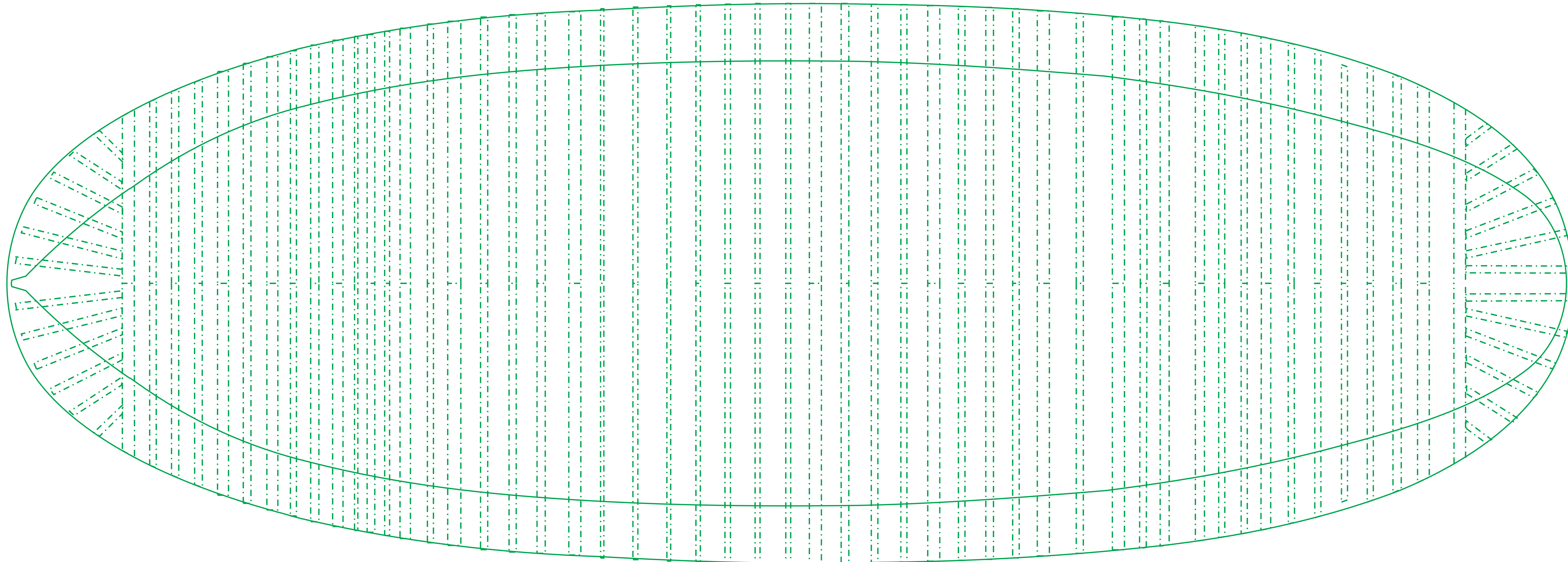
1/4" = 1'



Converted to Vector from a Raster scan by Bob Hill January 2006

LINE DRAFT #4

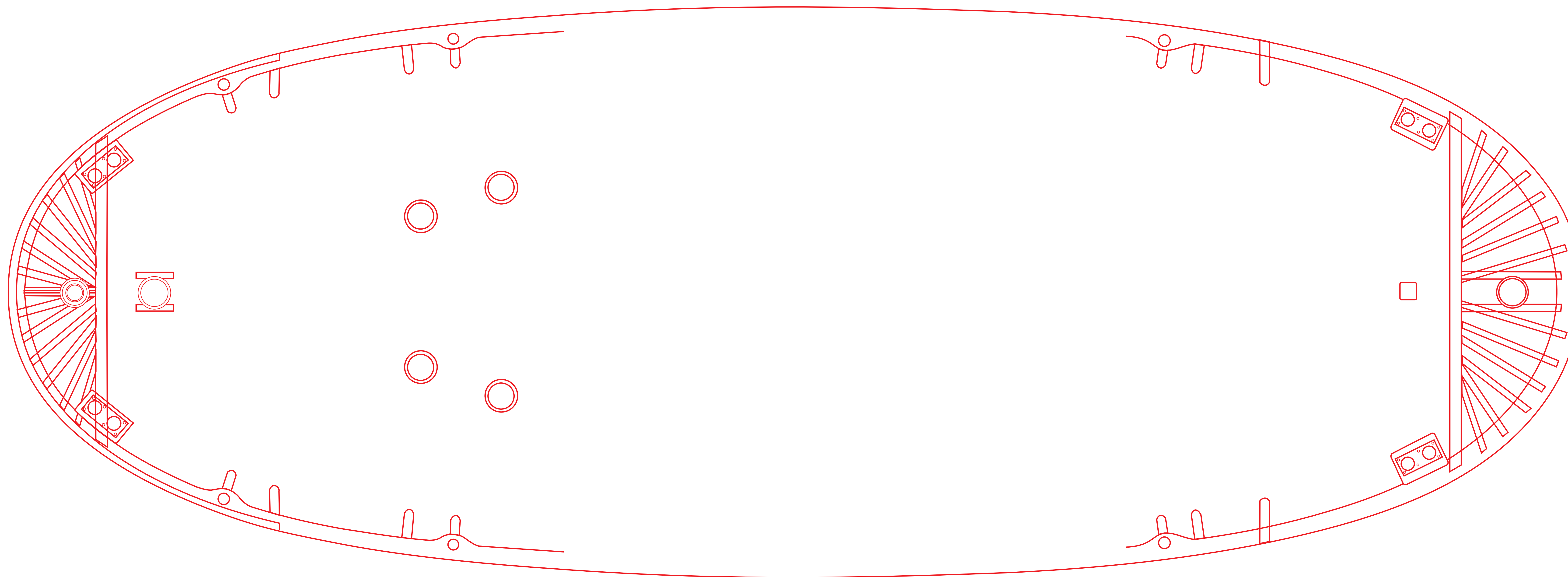
1/4" = 1'



Converted to Vector from a Raster scan by Bob Hill January 2006

LINE DRAFT #5

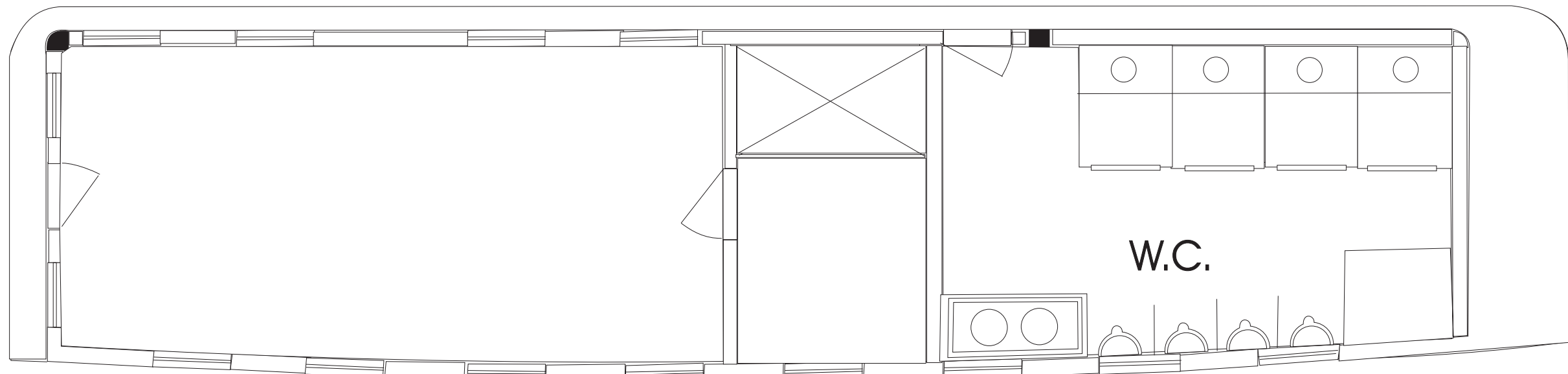
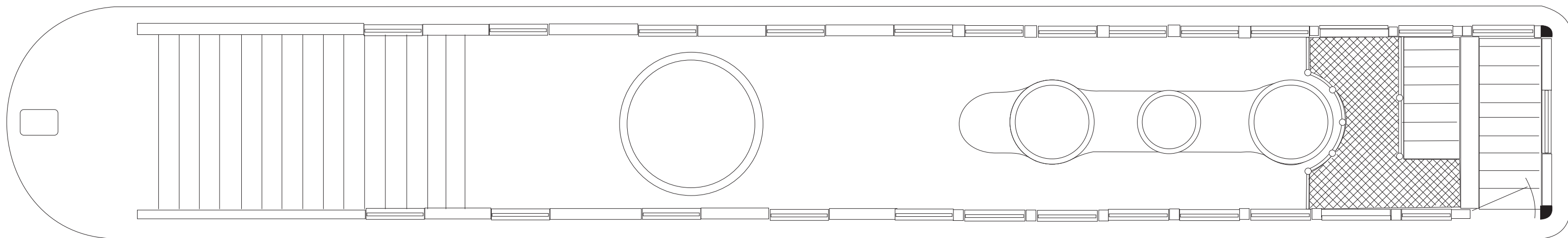
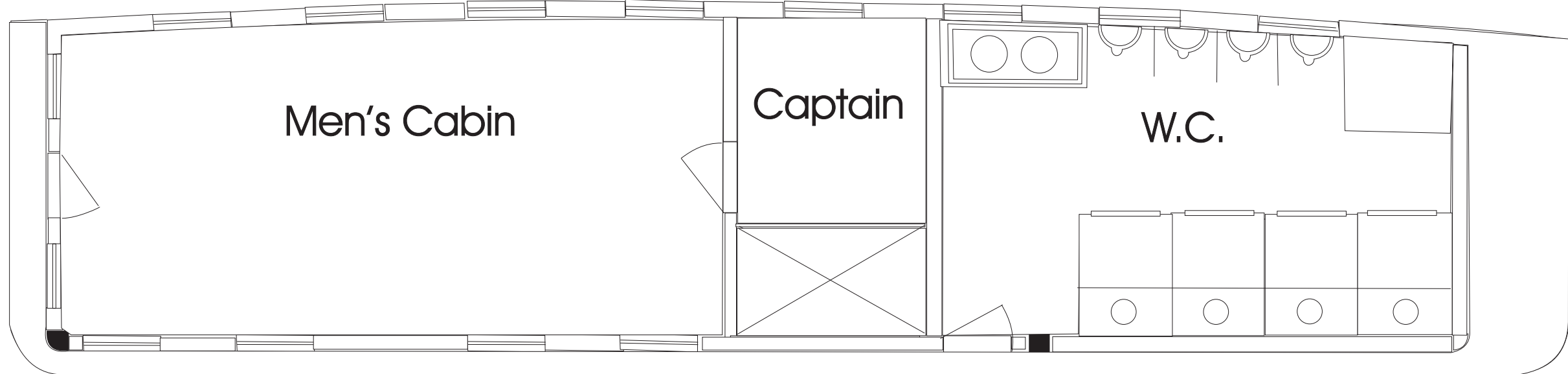
1/4" = 1'



Converted to Vector from a Raster scan by Bob Hill January 2006

LINE DRAFT #6

1/4" = 1'



Converted to Vector from a Raster scan by Bob Hill January 2006

STEM BAR
Scale 1" = 1'

